

Please see Reverse

NUMBERS UP!  
Volcanic Panic

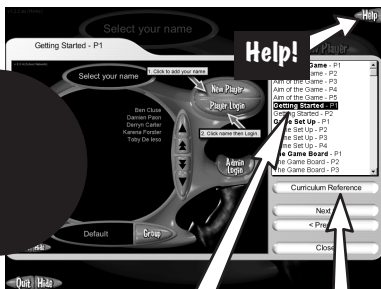
# Quickstart

**1. Getting Started:** For full Instructions on getting started, click on the 'Help' button at the bottom left-hand corner of the screen then on 'Getting Started' from the contents.

**2. Passwords:** The Admin Login password is **Admin**. Player passwords may be viewed in the Admin section.

### 3. Curriculum Reference:

To see how Numbers Up! Volcanic Panic relates to your Mathematics curriculum, click the 'Help' button, the 'Curriculum Reference' button under the Help contents and then the desired category from the list.



Getting  
Started

Curriculum  
Reference

**IMPORTANT !**  
See enclosed Technical Support  
Information or see  
[www.edalive.com/support](http://www.edalive.com/support)

# Installation

## Windows

1. Insert the CD into the CD drive of your computer.
2. The CD should autorun (start automatically).

Follow the on-screen prompts to install the software.

3. If the CD does not autorun, click on the "START" button, then click "RUN", then click "BROWSE", then navigate to your CD drive where the Numbers Up Volcanic Panic CD is located. Find the Installer file and click on it , then click "OPEN", then click "OK".

This will start the installation process. Once the setup starts, just follow the on-screen instructions to install the program.

4. Start the program from the Desktop icon or the **Start menu->programs.**

Please see  
Reverse

## Mac Classic & OS X

1. Insert the CD into the CD drive. The CD icon will appear on the desktop of your computer.
2. Double click on the CD icon on the Desktop to open it.
3. Now double-click on the Installer icon to start the installation of the program. Follow the prompts to complete the installation.
4. To start the program double click on the program icon on your hard drive.

*Note: It is most important to open the CD Icon in Icon view mode, not column or list mode.*

*The software will NOT run from the CD*

### **Computer System Requirements:**

**Windows** – Win 95 or later, 16MB available RAM, 133 MHz or faster

**Macintosh** – OS 9.2 or later or OS X 10.1.5 or later, 24MB available RAM, Power PC