

Please see Reverse

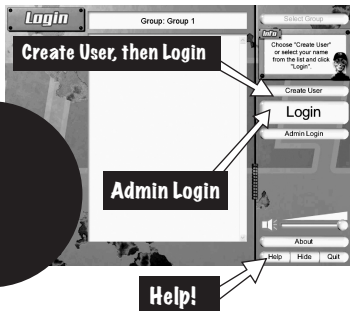
WORDS  
Rock!

# Quickstart

1. **Before** you can play you need to **create a player** by entering your name, age and password. Now click 'Login' and then choose 'Basic' or 'Advanced' Game.

2. **The** initial Admin Login password is **Admin** (it is recommended that this be changed as soon as possible).

3. For full Instructions on **getting started**, click on the '**Help**' button at the bottom right-hand corner of the screen, then on 'Getting Started' from the contents.



**IMPORTANT !**  
See enclosed Technical Support  
Information or see  
[www.edalive.com/support](http://www.edalive.com/support)

# Installation

Please see  
Reverse

## Windows

1. Insert the CD into the CD drive of your computer.
2. The CD should autorun (start automatically).

Follow the on-screen prompts to install the software.

3. If the CD does not autorun, click on the "START" button, then click.

"RUN" then click "BROWSE", then navigate to your CD drive where the Words Rock CD is located. Find the Installer file and click on it, then click "OPEN", then click "OK".

This will start the installation process. Once the setup starts, just follow the on-screen instructions to install the program.

4. Start the program from the Desktop icon or the **Start menu->programs**.

## Mac Classic & OS X

1. Insert the CD into the CD drive. The CD icon will appear on the desktop of your computer.

2. Double click on the CD icon on the Desktop to open it.

3. Now double-click on the Installer icon to start the installation of the program. Follow the prompts to complete the installation.

4. To start the program double click on the program icon on your hard drive.

*Note: It is most important to open the CD Icon in Icon view mode, not column or list mode.*

*The software will NOT run from the CD*

### **Computer System Requirements:**

**Windows** – Win 98se or later, 48MB available RAM, 233 MHz or faster

**Macintosh** – PPC with Mac OS 9.2 or OS X 10.1.5 or later, 32Mb RAM, 180MHz

*Note: There may be some problems with early versions of 10.2*